

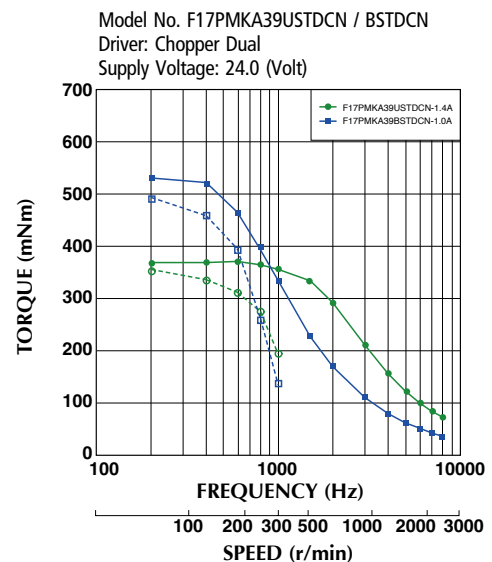
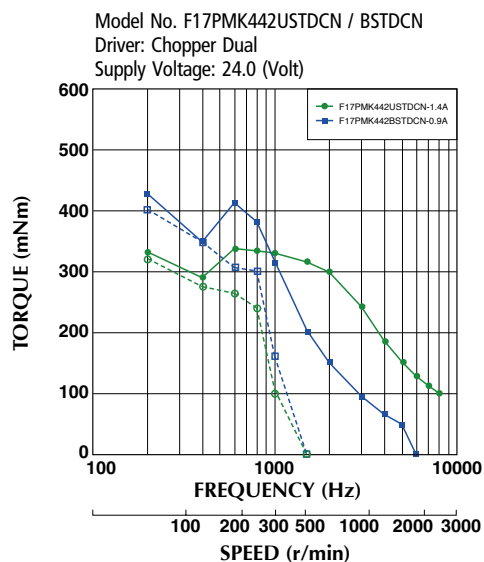
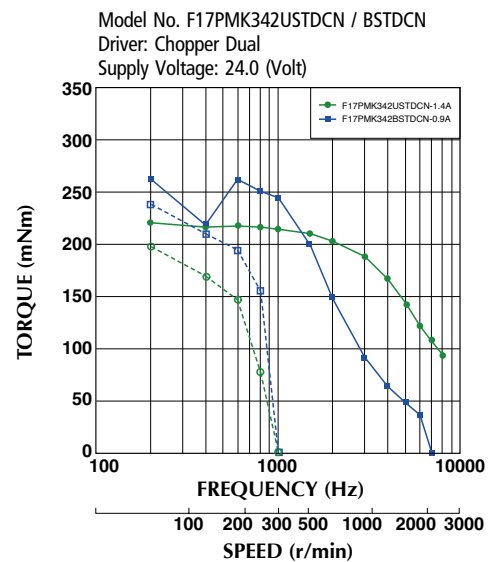
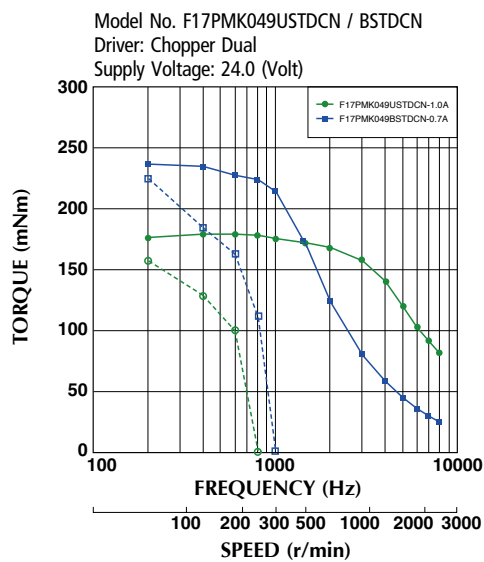
Hybrid Stepping Motor Long-Life Type



Lineup

Model			Drive Sequence (A)	Rated Current (A)	Resistance (Ohms)	Holding Torque (mNm)	Inductance (mH)	Rotor Inertia (g · cm ²)	Detent Torque (mNm)	Mass (g)
	(mm)	(deg)								
F17PMK049USTDCN	34	1.8	UNI-POLAR	1.0	3.1	181	3.4	39	8.3	220
F17PMK342USTDCN	38	1.8	UNI-POLAR	1.4	2.0	225	2.6	51	8.5	270
F17PMK442USTDCN	48	1.8	UNI-POLAR	1.4	2.8	362	3.6	78	12.5	370
F17PMKA39USTDCN	60	1.8	UNI-POLAR	1.4	2.9	431	4.2	115	16.2	510
F17PMK049BSTDCN	34	1.8	BI-POLAR	0.7	6.2	246	13.6	39	8.3	220
F17PMK342BSTDCN	38	1.8	BI-POLAR	0.9	4.0	283	10.4	51	8.5	270
F17PMK442BSTDCN	48	1.8	BI-POLAR	0.9	5.6	452	14.4	78	12.5	370
F17PMKA39BSTDCN	60	1.8	BI-POLAR	1.0	5.8	597	16.8	115	16.2	510

Torque/Speed Characteristics

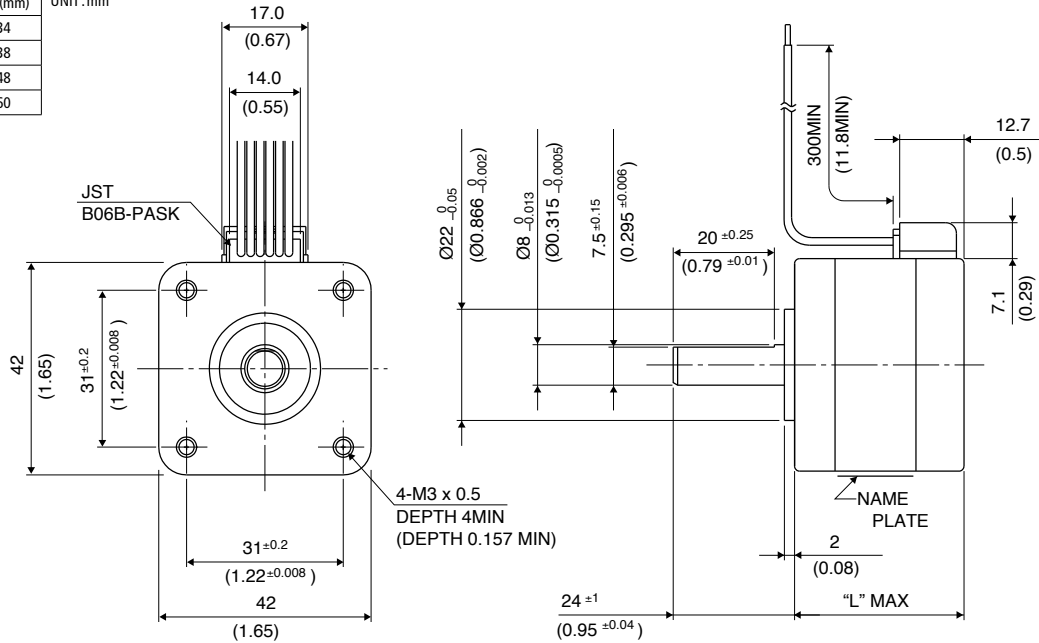


— : PULL OUT
- - - : PULL IN

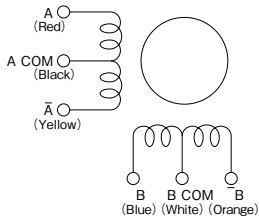
Torque/Speed characteristics are for reference only and it may change when operated at different drive conditions.

Outline

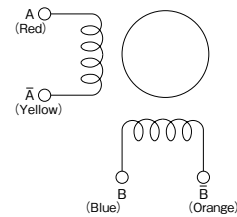
Model	"L" (mm)	UNIT:mm
F17PMK049x	34	
F17PMK342x	38	
F17PMK442x	48	
F17PMKA39x	60	



UNI POLAR Wiring Connection Diagram



BI POLAR Wiring Connection Diagram



General Specifications

Step Accuracy	±5%
Temperature Rise	80°C MAX
Ambient Temperature Range	-10°C~+50°C
Insulation Resistance	100M Ω MIN. DC 500V
Dielectric Strength	AC 500V 1min
Radial Play	20 μm MAX. (at 4.4N {450gf} [Load])
End Play	80 μm MAX. (at 4.4N {450gf} [Load])