



PG Type
Motors

Reference Characteristics

Motor Size	PG15S — D20	
Reduction Ratio	1 / 50	1 / 102.5
Drive Method	2 — 2 PHASE	
Drive Circuit	BIPOLAR CONST. VOLT.	
Drive Voltage	5 [V]	
Step Angle (2phase drive)	0.36°	0.175°
DC Resistance	10 [Ω]	
Insulation Resistance	100M [Ω] MIN	
Dielectric Strength	AC 500 [V] 1 [min]	
Class of Insulation	CLASS B (リ — except lead wire)	
Operating Temp.	0 [°C] ~ 50 [°C]	
Storage Temp.	- 30 [°C] ~ 80 [°C]	
Operating Hum.	20 [%] RH ~ 90 [%] RH	

※Bipolar only. Unipolar is not available.

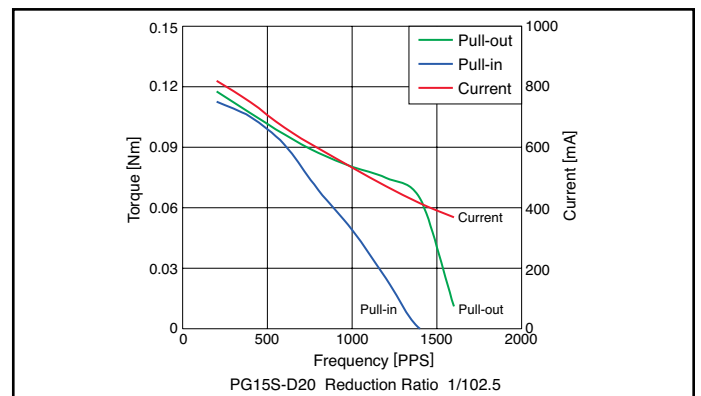
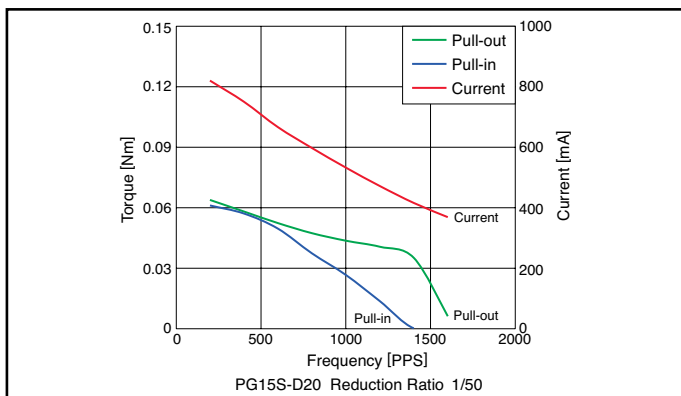
Applications

Home electric appliances : Air-conditioners

OA Equipment : Printers / Photocopiers

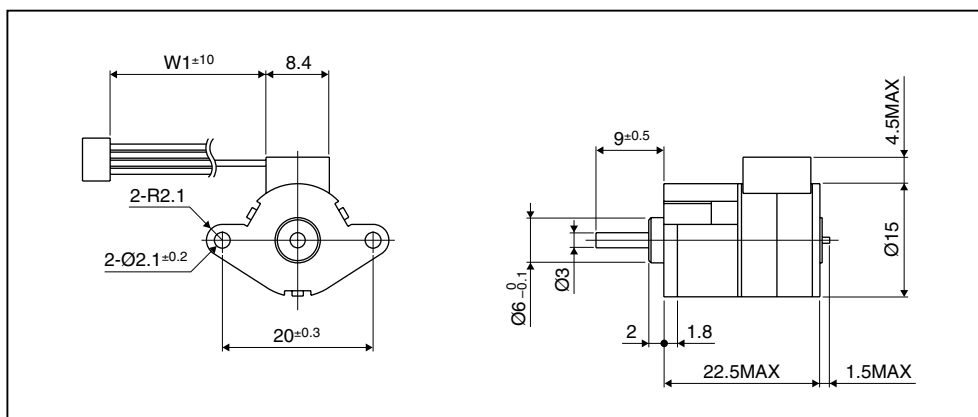
電動工具 : ドリル、ドライバー
Power Tools : Drills / Drivers

Torque Characteristics



These torque values are reference only. Heat radiation conditions and temperature rise effect by duty are different on each equipment, therefore please select motors after considering the actual equipment.

Dimensions



Please contact our sales for inventory and lot information. Specification may be changed without notice.