

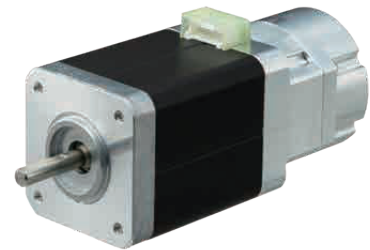
Hybrid Stepper With Brake

Q17PM

Minebea

Features

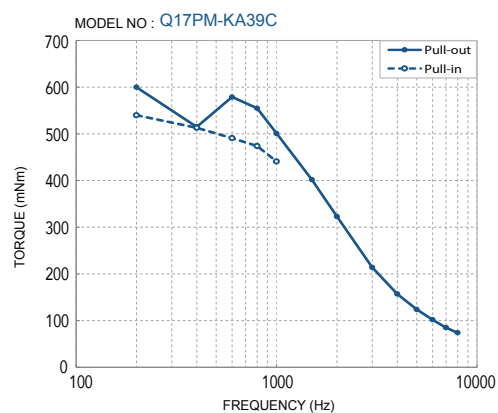
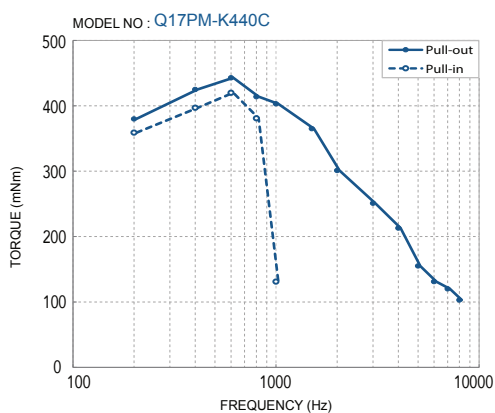
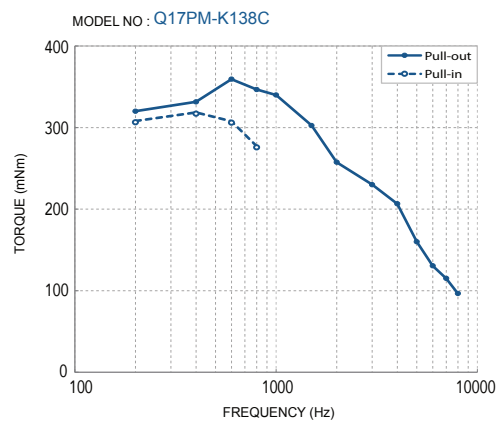
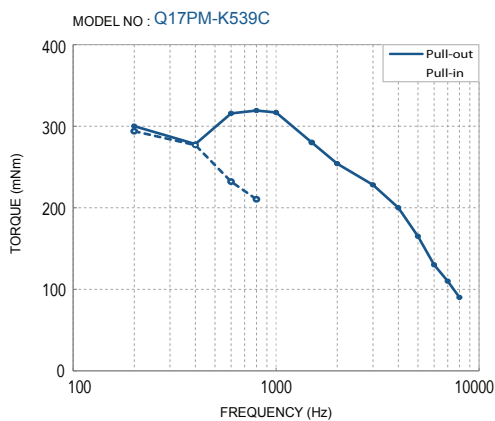
- Integrated electromagnetic brake* that holds the load and prevents drag when stopped under external pressure
 - Brake torque (static friction torque): 300 mN·m
 - Power ON: Brake release, Power OFF: Brake lock
- *A separate power supply (DC24V) is required for the brake, independent of the motor power supply.



Specifications

Model Number	Size	Number of Steps	Drive Method	Rated Current	Wire Winding Resistance	Holding Torque	Inductance	Rotor Inertia	Detent Torque	Mass	Electromagnetic Brake	
											Voltage	Static Friction Torque
-	-	deg	-	A	ohms	mNm	mH	g·cm ²	mNm	g	V	mNm
Q17PM-K539C	□42x38	1.8	BI-POLAR	2.3	0.7	250	1.55	49	14	470	24	300
Q17PM-K138C	□42x44	1.8	BI-POLAR	2.3	0.85	360	2.0	68	15	500	24	300
Q17PM-K440C	□42x50	1.8	BI-POLAR	2.3	1.3	550	2.8	81	20	550	24	300
Q17PM-KA39C	□42x62	1.8	BI-POLAR	2.3	1.5	630	4.1	126	25	690	24	300

Characteristics



Hybrid Stepper With Brake

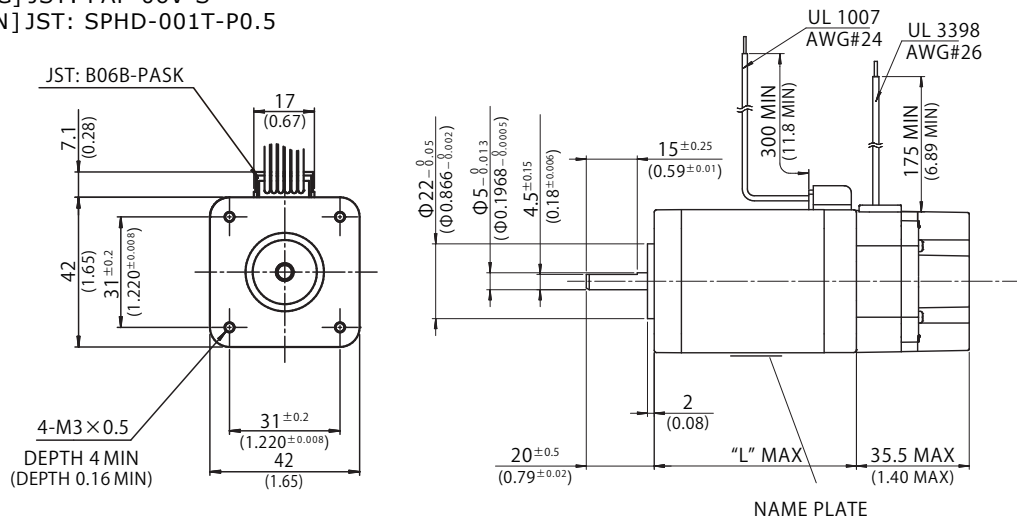
Q17PM

Minebea

Dimensions

Outline

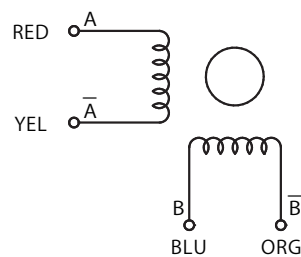
- LEAD WIRE SIDE
- [HSG] JST: PAP-06V-S
- [PIN] JST: SPHD-001T-P0.5



MODEL	"L" mm (inch)
Q17PM-K5XX	38 (1.50)
Q17PM-K1XX	44 (1.73)
Q17PM-K4XX	50 (1.97)
Q17PM-KAXX	62 (2.44)

UNIT: $\frac{\text{mm}}{\text{inch}}$

Bipolar Wiring Diagram



L/W COLOR	RED	BLU	YEL	ORG
STEP				
1	+	+	-	-
2	-	+	+	-
3	-	-	+	+
4	+	-	-	+