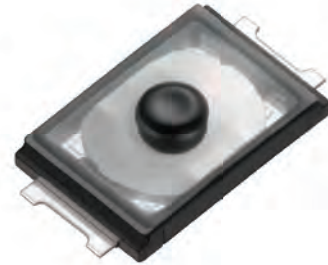


Features

- Small size and mounting area (2.0mm width)
- Good feel with the actuator
- Suitable for high load support (3.3N)
- IP68 dust / water resistance



Applications

- Smartphones
- Digital cameras
- Gaming devices
- Wearables
- Other electronic devices - consumer, medical, commercial

Part Number Code

Series	Height	Actuator Type	Operating Force	Ablation Terminal	
<div style="display: flex; gap: 5px;"> <div style="border: 1px solid black; width: 20px; height: 20px;"></div> <div style="border: 1px solid black; width: 20px; height: 20px;"></div> <div style="border: 1px solid black; width: 20px; height: 20px;"></div> </div> <p>STO</p>	<div style="display: flex; gap: 5px;"> <div style="border: 1px solid black; width: 20px; height: 20px;"></div> <div style="border: 1px solid black; width: 20px; height: 20px;"></div> <div style="border: 1px solid black; width: 20px; height: 20px;"></div> </div> <p>060 (0.60mm)</p>	<div style="border: 1px solid black; width: 20px; height: 20px;"></div> <p>A</p>	<div style="border: 1px solid black; width: 20px; height: 20px;"></div> <p>16 (1.6N) 24 (2.4N) 33 (3.3N)</p>	<div style="border: 1px solid black; width: 20px; height: 20px;"></div> <p>A (IP68)</p>	X

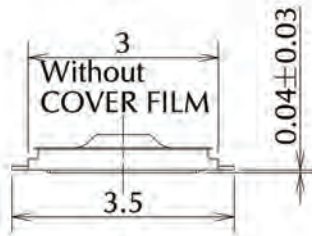
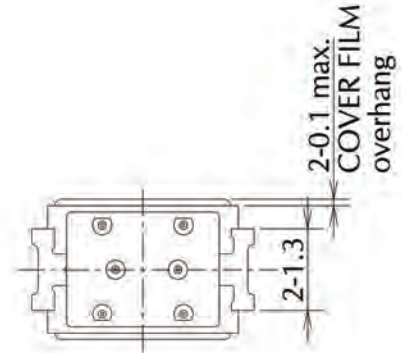
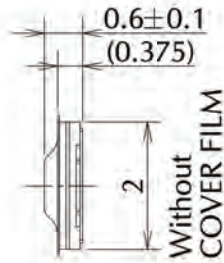
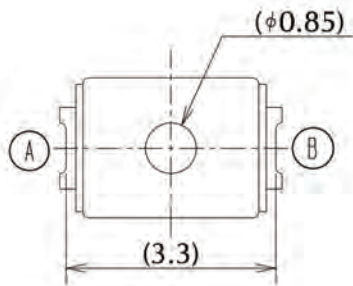
Specifications

Switch Type	SPST	Tactile
Electrical Characteristics	Rating (Resistive Load)	DC15V, 20mA
	Contact Resistance	500mΩ or less
	Insulation Resistance	5MΩ or more
	Withstand Voltage	1 minute at AC 100V
Life	STO-060A16AB	500,000 times
	STO-060A24AB	500,000 times
	STO-060A33AC	300,000 times
Dust / Water Resistance	Protective Resistance	IP68 (1.5m depth x 30 min.)

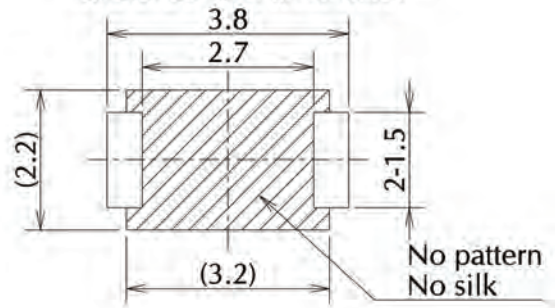
Type

Model Name	Model No.	Operating Force	Travel	Click Ratio	Boss	Pcs/Reel
STO-060A16AB	R 667995	1.6N	0.13mm	≥ 40%	Without	20,000
STO-060A24AB	R 667996	2.4N	0.13mm	≥ 40%	Without	20,000
STO-060A33AC	R 668003	3.3N	0.13mm	≥ 40%	Without	20,000

Dimensions



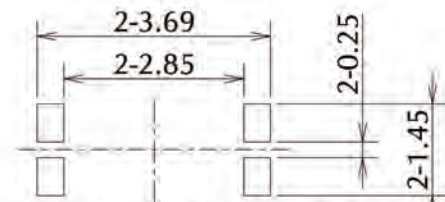
Reference land dimension



Circuit diagram



Reference solder stencil dimension



The thickness of solder stencil: 80 μm