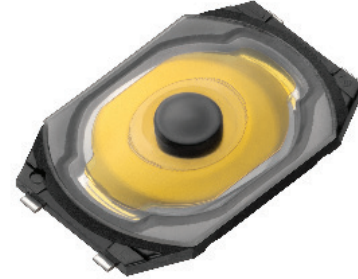


### FEATURES

- Long-Life: 1,000,000 times
- Good feel with the actuator

### APPLICATIONS

- Smartphones
- Digital cameras
- Gaming devices
- Wearables
- Other electronic devices - consumer, medical, commercial



### PART NUMBER CODE

Series	Height	Actuator Type	Operating Force	Ablation Terminal
<input type="text"/> <input type="text"/> <input type="text"/>	<input type="text"/> <input type="text"/> <input type="text"/>	<input type="text"/>	<input type="text"/> <input type="text"/>	<input type="text"/> <input checked="" type="checkbox"/>
STV	072 (0.72mm)	A	25 (2.5N)	X (none)

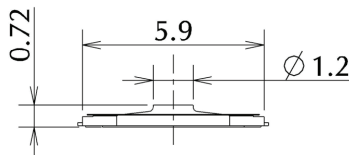
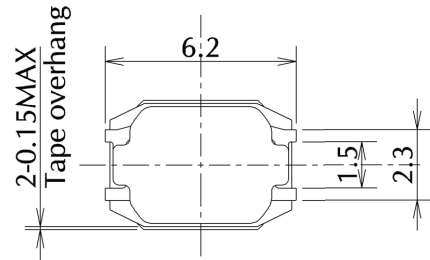
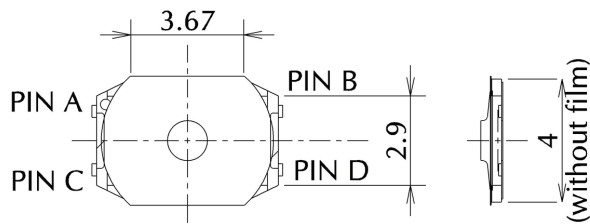
### SPECIFICATIONS

<b>Switch Type</b>	SPST	Tactile
<b>Electrical Characteristics</b>	Rating (Resistive Load)	DC15V, 20mA
	Contact Resistance	1Ω or less
	Insulation Resistance	10MΩ or more
	Withstand Voltage	1 minute at AC 100V
<b>Life</b>	STV-072A25XX	1,000,000 times

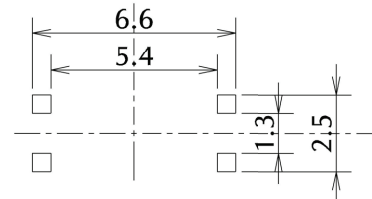
## TYPE

Model Name	Model No.	Operating Force	Travel	Click Ratio	Boss	Pcs/Reel
STV-072A25XX	R 667813	2.5N	0.21mm	≥ 40%	Without	10,000

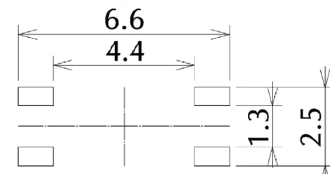
## DIMENSIONS



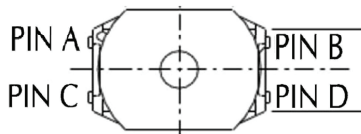
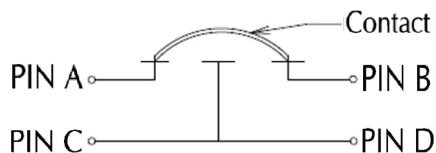
Reference solder stencil dimension



Reference thickness of solder stencil: 100 μm



Reference land dimension



It is not guaranteed that PIN A and PIN B are always connected inside of the switch. Connecting by pattern the terminal lands each A & B, and C & D is recommended.

Recommend land dimension

