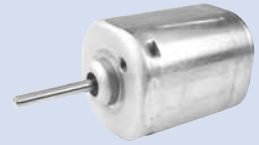


**SE24M** (□ 24 x 30mm)

Carbon Brush

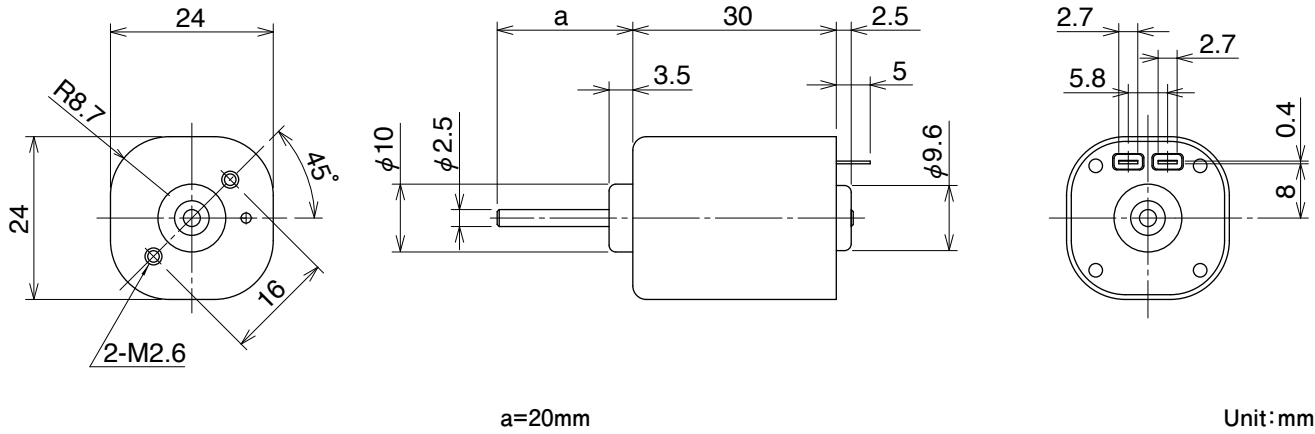


Weight:56.0g

**Applications**

Automotive, Robot

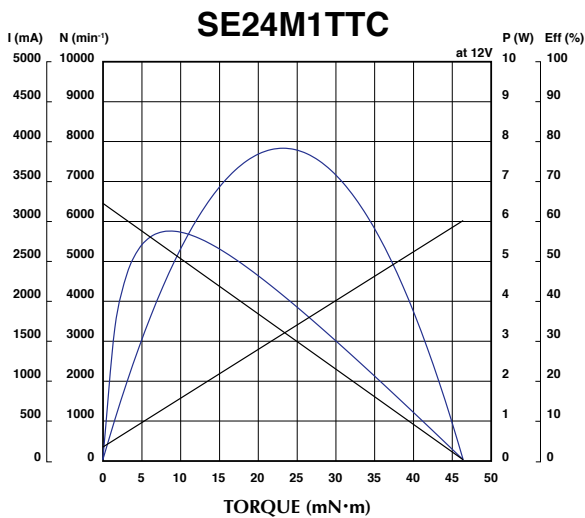
**External Dimensions**



**Reference Characteristics**

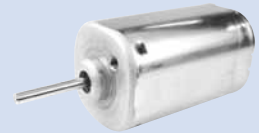
Model	Voltage		No Load		Rated Load		Rated Load		Starting Torque		Starting Current	Shaft Length
	Operating	Rated	Speed	Current			Speed	Current				
	(V)	(V)	(min <sup>-1</sup> )	(mA)	(gf·cm)	(mN·m)	(min <sup>-1</sup> )	(mA)	(gf·cm)	(mN·m)	(mA)	(mm)
SE24M1TTC	8 to 13	12	6433	159	102	10	5046	772	473	46.4	3000	20

**Characteristics**



**SE24P** (□ 24 x 40mm)

Carbon Brush

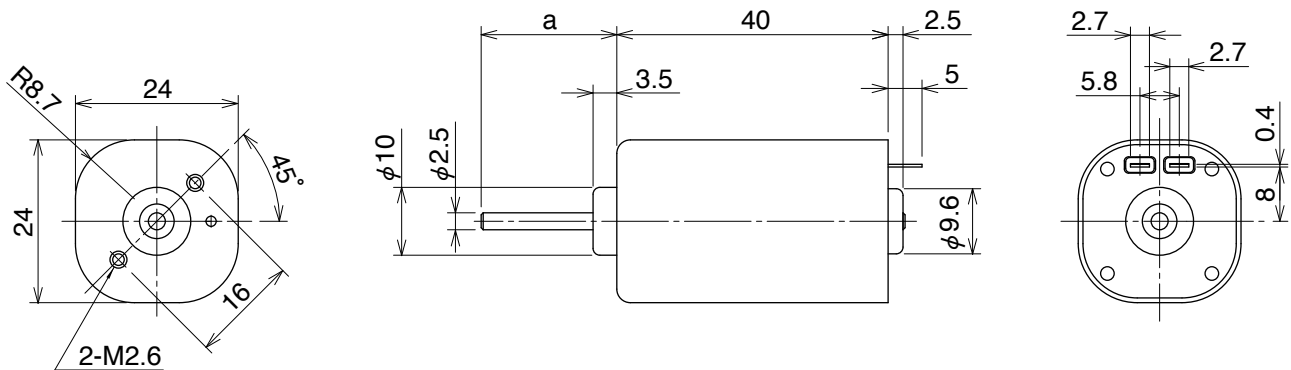


Weight:84.0g

**Applications**

Automotive, Robot

**External Dimensions**



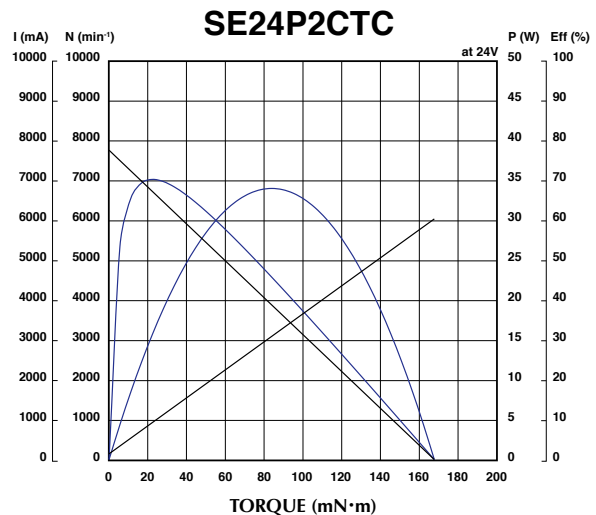
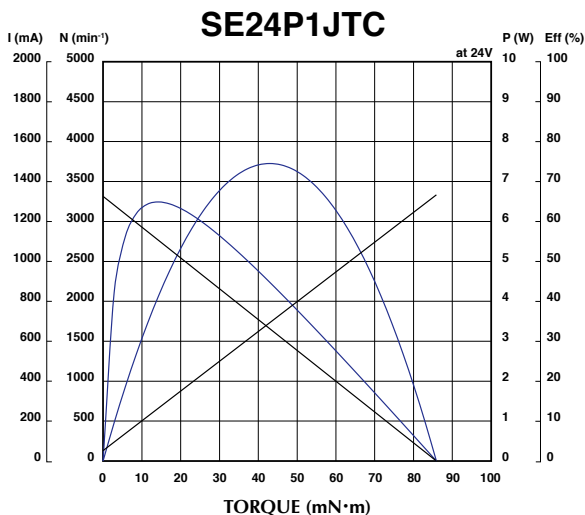
a=20mm

Unit: mm

**Reference Characteristics**

Model	Voltage		No Load		Rated Load		Rated Load		Starting Torque		Starting Current	Shaft Length
	Operating	Rated	Speed	Current			Speed	Current				
	(V)	(V)	(min <sup>-1</sup> )	(mA)	(gf·cm)	(mN·m)	(min <sup>-1</sup> )	(mA)	(gf·cm)	(mN·m)	(mA)	(mm)
SE24P1JTC	20 to 26	24	3274	40	204	20	2508	343	871	85.4	1335	20
SE24P2CTC	20 to 26	24	7772	145	204	20	6843	850	1707	167	6047	20

**Characteristics**



**SV24A** (□ 24 x 50mm)

Carbon Brush

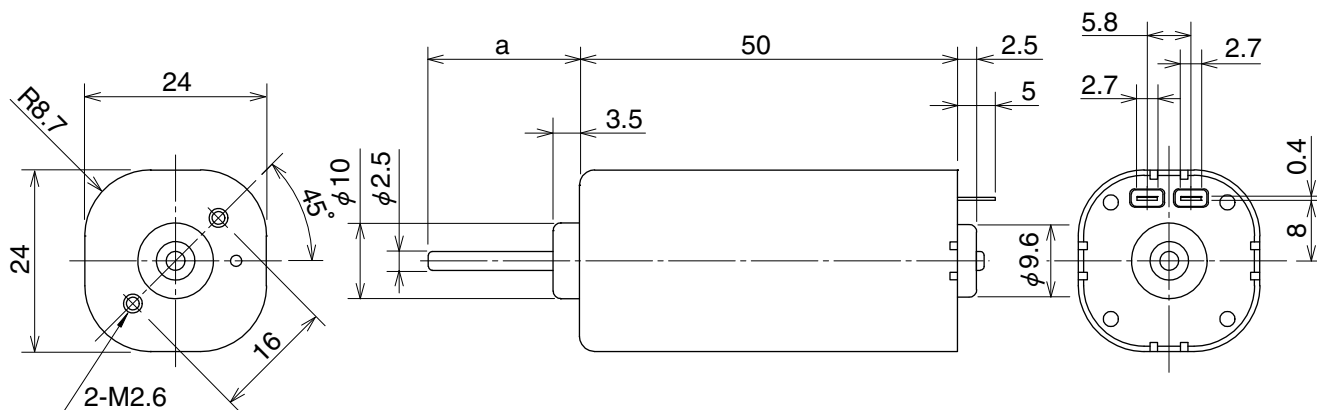


Weight:105.0g

**Applications**

Automotive

**External Dimensions**



a=20mm

Unit: mm

**Reference Characteristics**

Model	Voltage		No Load		Rated Load		Rated Load		Starting Torque		Starting Current (mA)	Shaft Length (mm)
	Operating	Rated	Speed	Current	Rated Load		Speed (min <sup>-1</sup> )	Current (mA)	Starting Torque (gf·cm)	Starting Torque (mN·m)		
	(V)	(V)	(min <sup>-1</sup> )	(mA)	(gf·cm)	(mN·m)						
SV24A3ATC	8 to 13	12	6438	266	306	30	5440	2038	1980	194	11692	20

**Characteristics**

